



# IP addressing overview

Pietro Nicoletti  
[www.studioreti.it](http://www.studioreti.it)

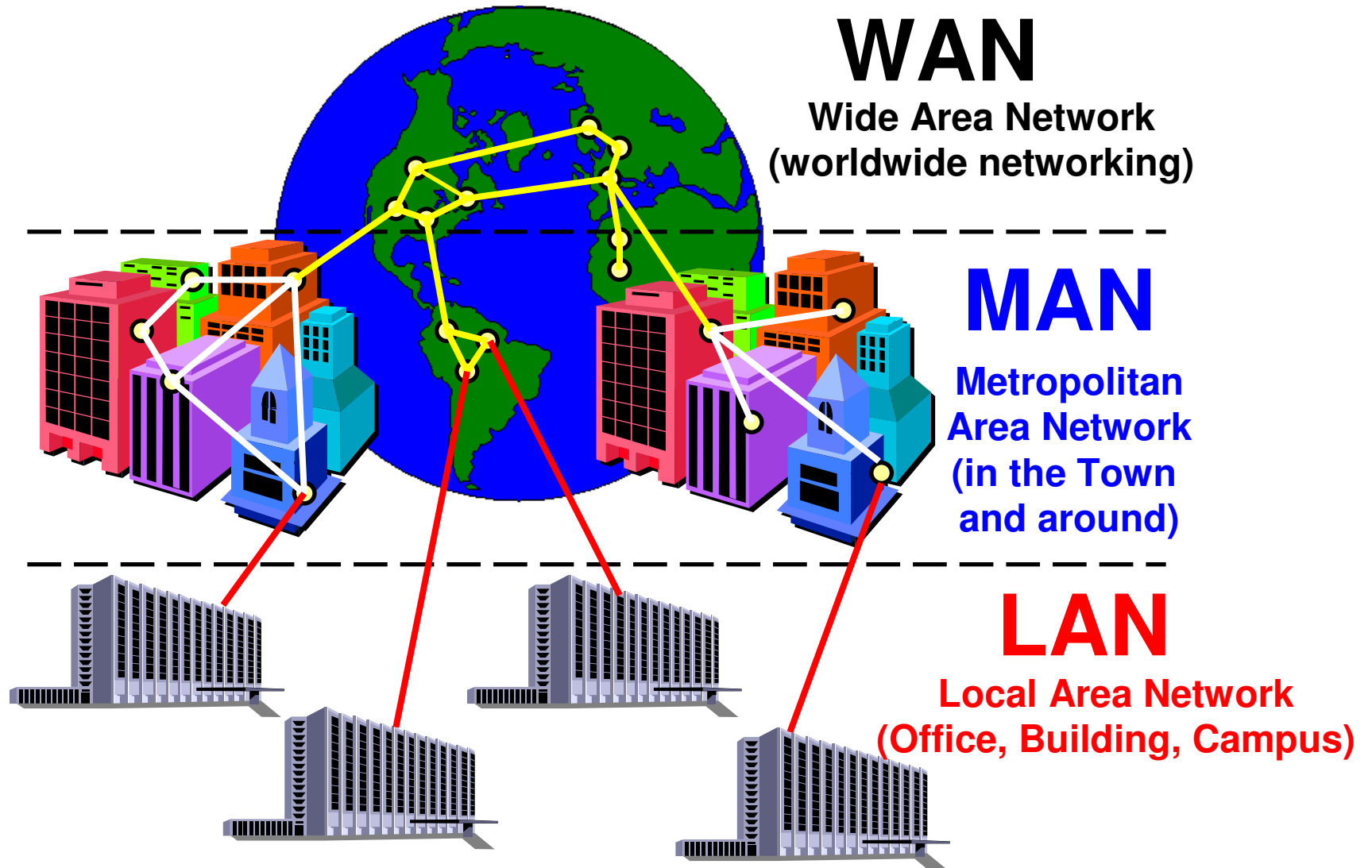


## Copyright note

- These slides are protected by copyright and international treaties. The title and the copyrights concerning the slides (inclusive, but not only, every image, photograph, animation, video, audio, music and text) are the author's (see Page 1) property.
- The slides can be copied and used by research institutes, schools and universities affiliated to the Ministry of Public Instruction and the Ministry of University and Scientific Research and Technology, for institutional purpose, not for profit. In this case there is not requested any authorization.
- Any other complete or partial use or reproduction (inclusive, but not only, reproduction on discs, networks and printers) is forbidden without written authorization of the author in advance.
- The information contained in these slides are believed correct at the moment of publication. They are supplied only for didactic purpose and not to be used for installation-projects, products, networks etc. However, there might be changes without notice. The authors are not responsible for the content of the slides.
- In any case there can not be declared conformity with the information contained in these slides.
- In any case this note of copyright may never be removed and must be written also in case of partial use.



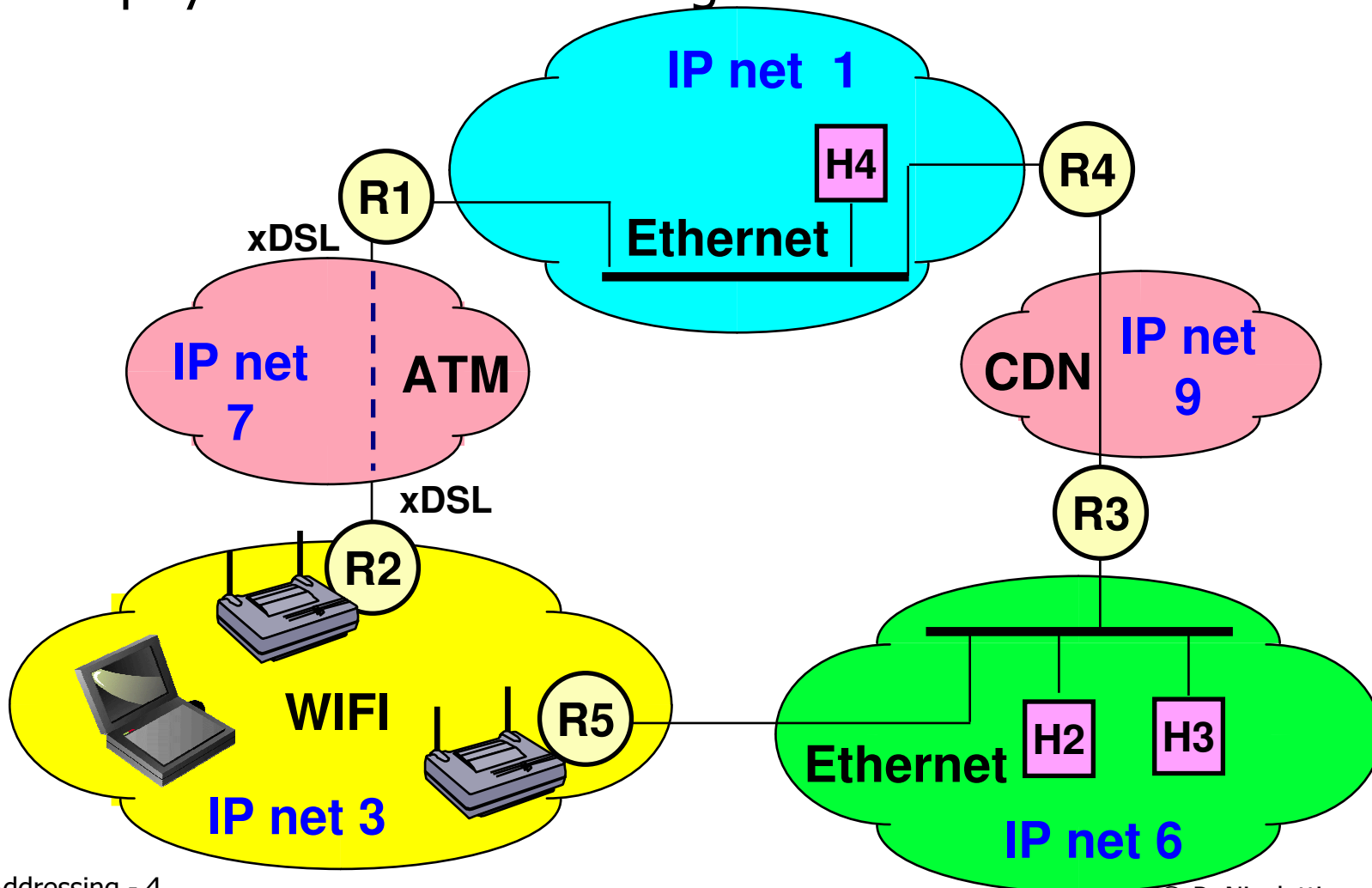
# Network structure





# IP architecture

- 1 physical network = 1 logical IP network





# IP: Internet Protocol

- Forward and route frames between hosts member of same IP network or different IP networks
- IP terms:
  - Host = computer o terminal equipment
  - Router or Gateway = equipment witch route message between different IP networks
  - Subnet



# IP addressing

- At any computer or host must assigned an IP address
- IP addresses are grouped in a network (like the telephone numbers are with a prefix)
  - hosts members of the same IP network can communicate directly
  - host members of different IP networks need to be routed by router
- IP address are based on 32 bits (4 bytes):
  - As in the telephone numbering the fist part of address is the Network Prefix number (*network field*) and the second part is host or station number (*host field*)



## How to write IP address

- 4 assembly separated by a dot. Any assembly represent a byte value
  - Any number assembly may have a value between 0 and 255
  - IP address example: 195.36.220.24



## IP address and class

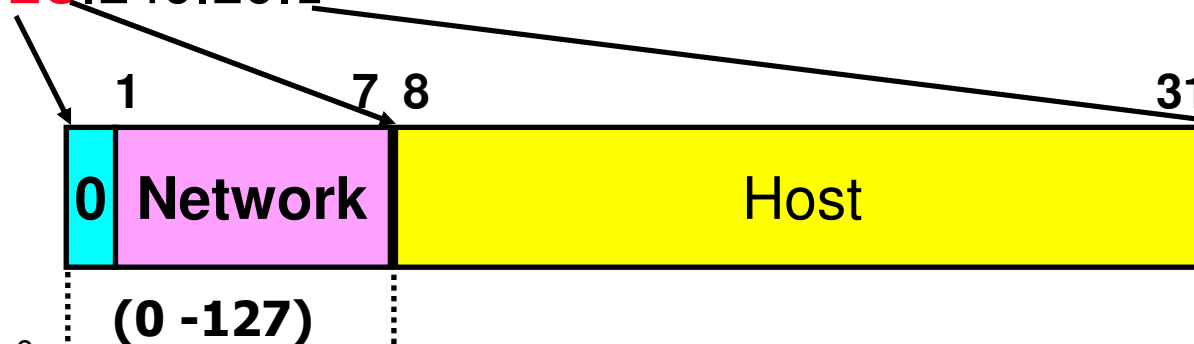
- Initially the address class determine the limit of network and host field
  - Class A
  - Class B
  - Class C
  - Class D (multicast)
- Later have been inserted the Subnetting and Netmask to realize a flexible and useful addressing system.
  - Actual addressing system



# Class A

- Network field
  - First 8 bit
  - max 128 network prefix
  - values between 0 and 127 on the first byte
- Host field
  - 24 bit
  - max 16M host addresses
- Class A address example:

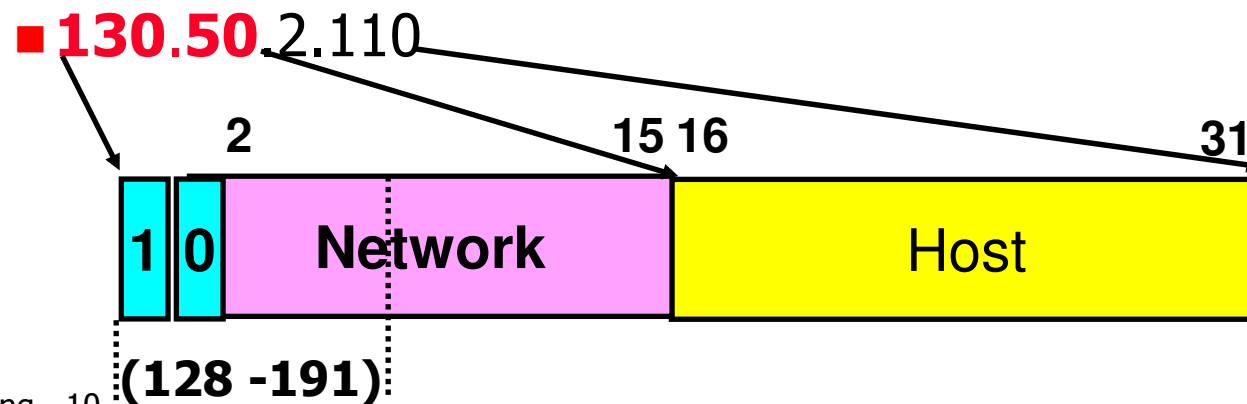
■ **10**.240.20.1





## Class B

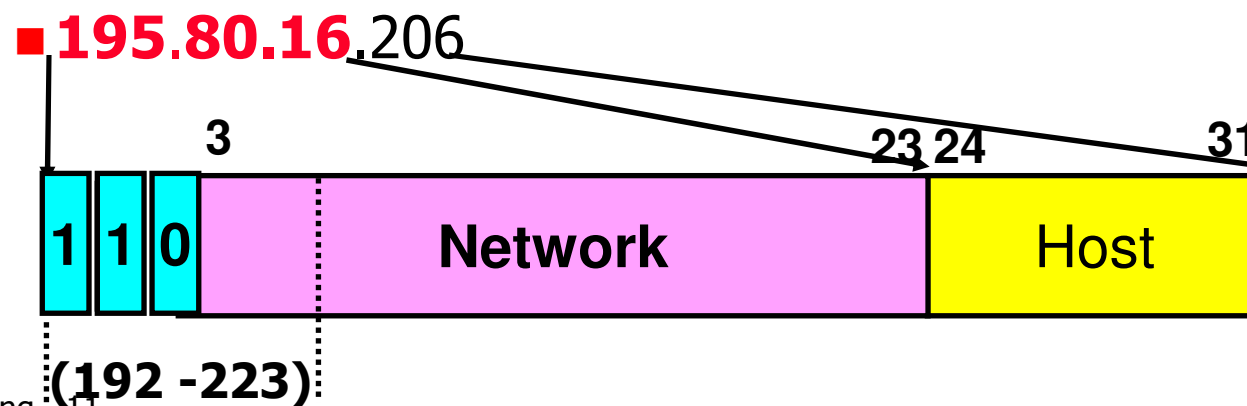
- Network field
  - First 16 bit
  - max 16K network prefix
  - values between 128 and 191 on the first byte
- Host
  - 16 bit
  - max 64K host addresses
- Class B address example:





## Class C

- Network field
  - First 24 bit
  - max 2M network prefix
  - values between 192 and 223 on the first byte
- Host
  - 8 bit
  - max 256 Host addresses
- Class C address example:

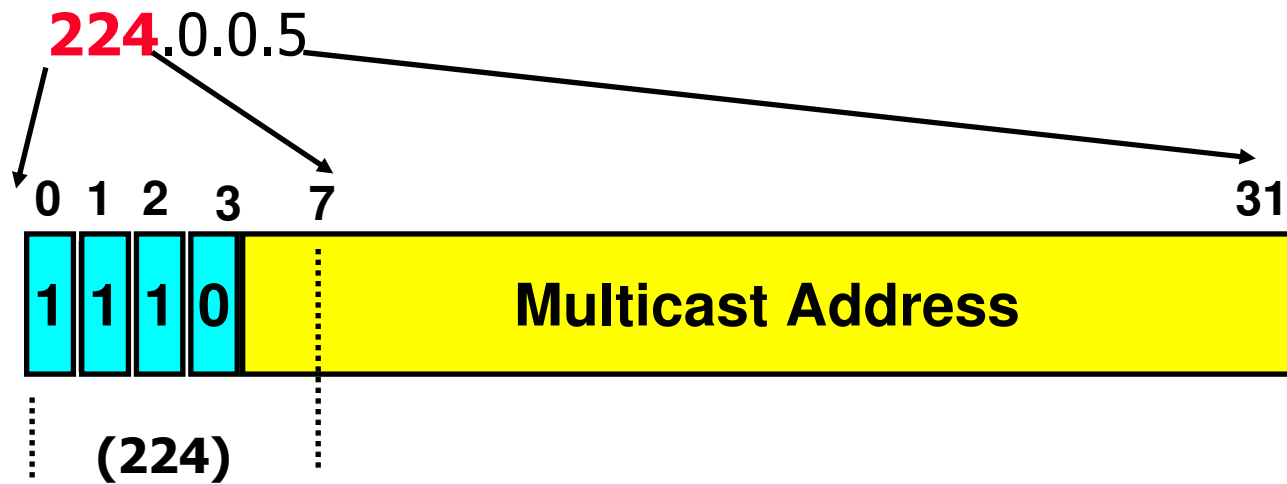




## Class D

- Multicast purpose

- Class D address example:





## Host field

- Not all binary combination can be used
  - All ones reserved for specific broadcast on the IP network
    - Example of specific broadcast address: 192.168.1.255
  - All zeros reserved to identify and address a IP network
    - Used by the router for network reachability information
    - Example of network address: 192.168.1.0



# Netmask

- Permit to extend or reduce the network limit
  - Subnetting when netmask extend the limit of network field
  - Supernetting when reduce the limit of network field
- Netmask is associated with IP address
- Netmask format
  - Contiguous sequence of *one* determine the *network field* length
  - Contiguous sequence of *zero* determine the *host field* length
- Natural netmask of classes
  - Class A = 255.0.0.0
  - Class B = 255.255.0.0
  - Class C = 255.255.255.0



## Netmask value

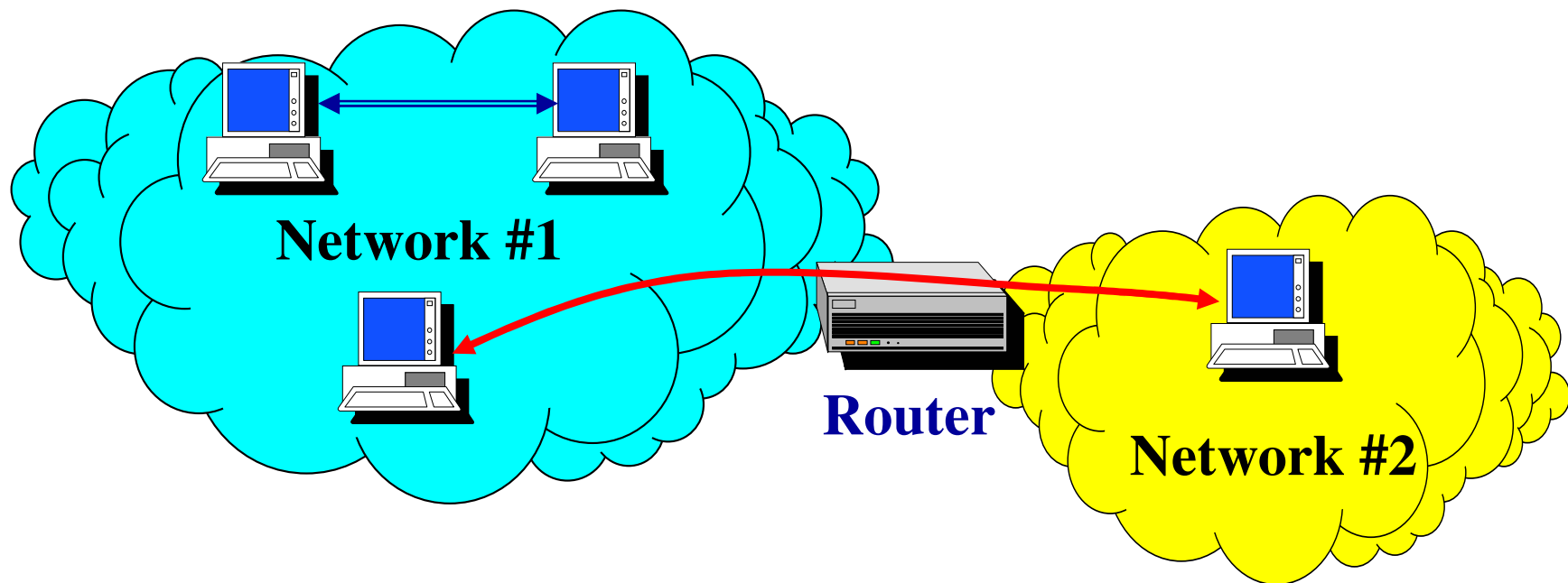
- Only those values represent contiguous sequence of one and zero bits

■ 0	0000 0000
■ 128	1000 0000
■ 192	1100 0000
■ 224	1110 0000
■ 240	1111 0000
■ 248	1111 1000
■ 252	1111 1100
■ 254	1111 1110
■ 255	1111 1111



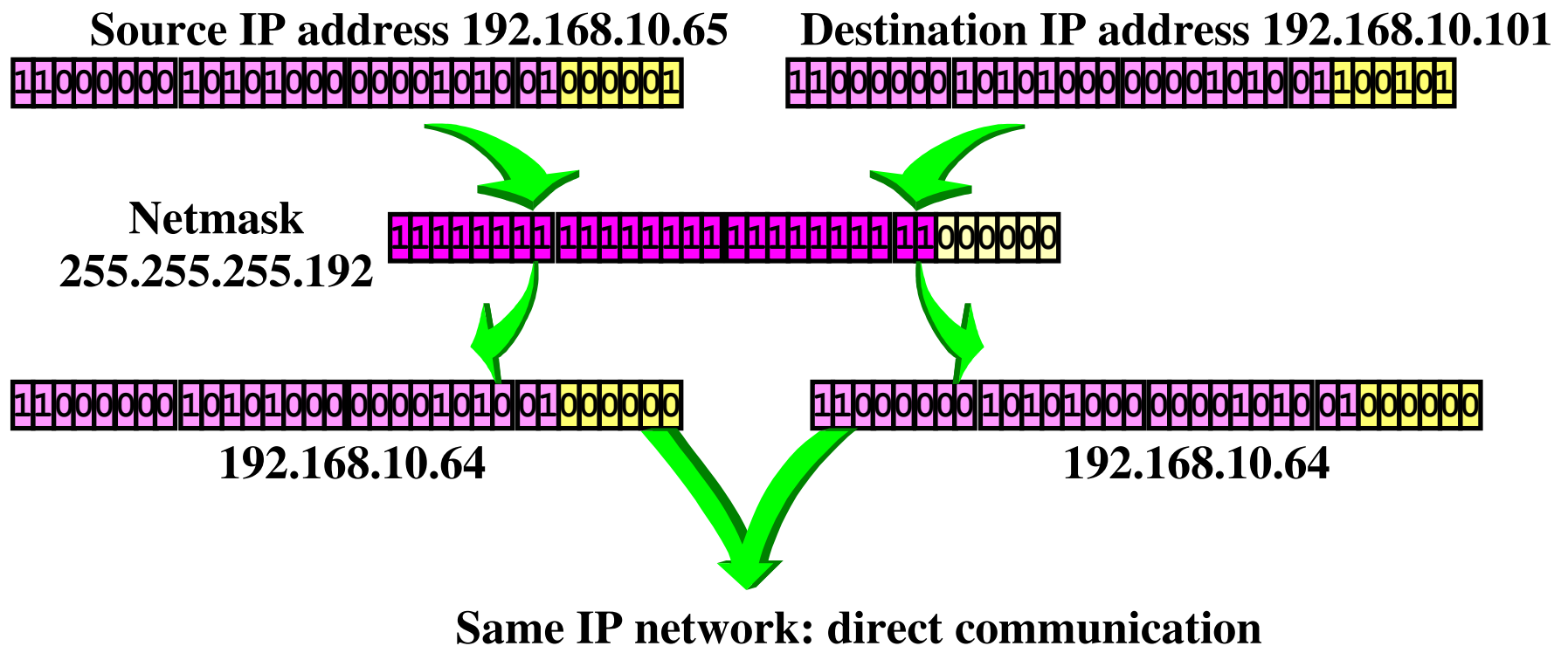


# IP Communication



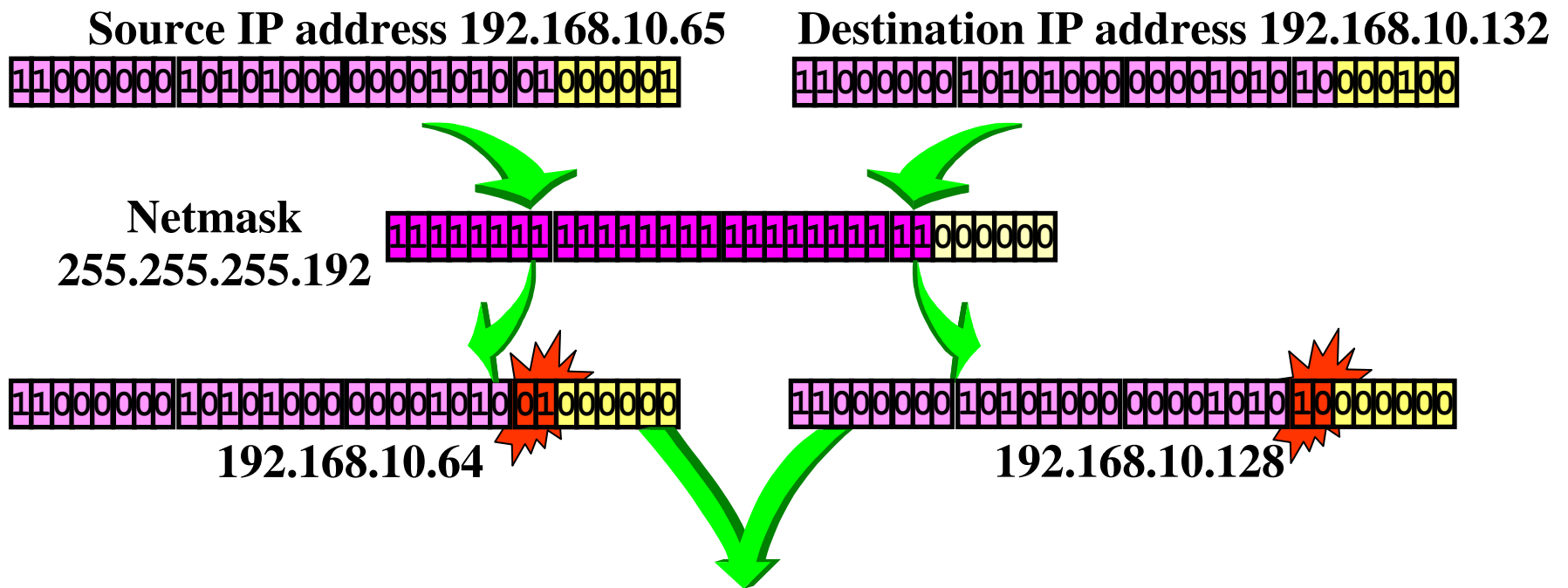


# Same IP network: direct communication





# Host in different IP network: communication trough router



**Different IP networks: communication trough router**