

Wireless LAN success story

Pietro Nicoletti

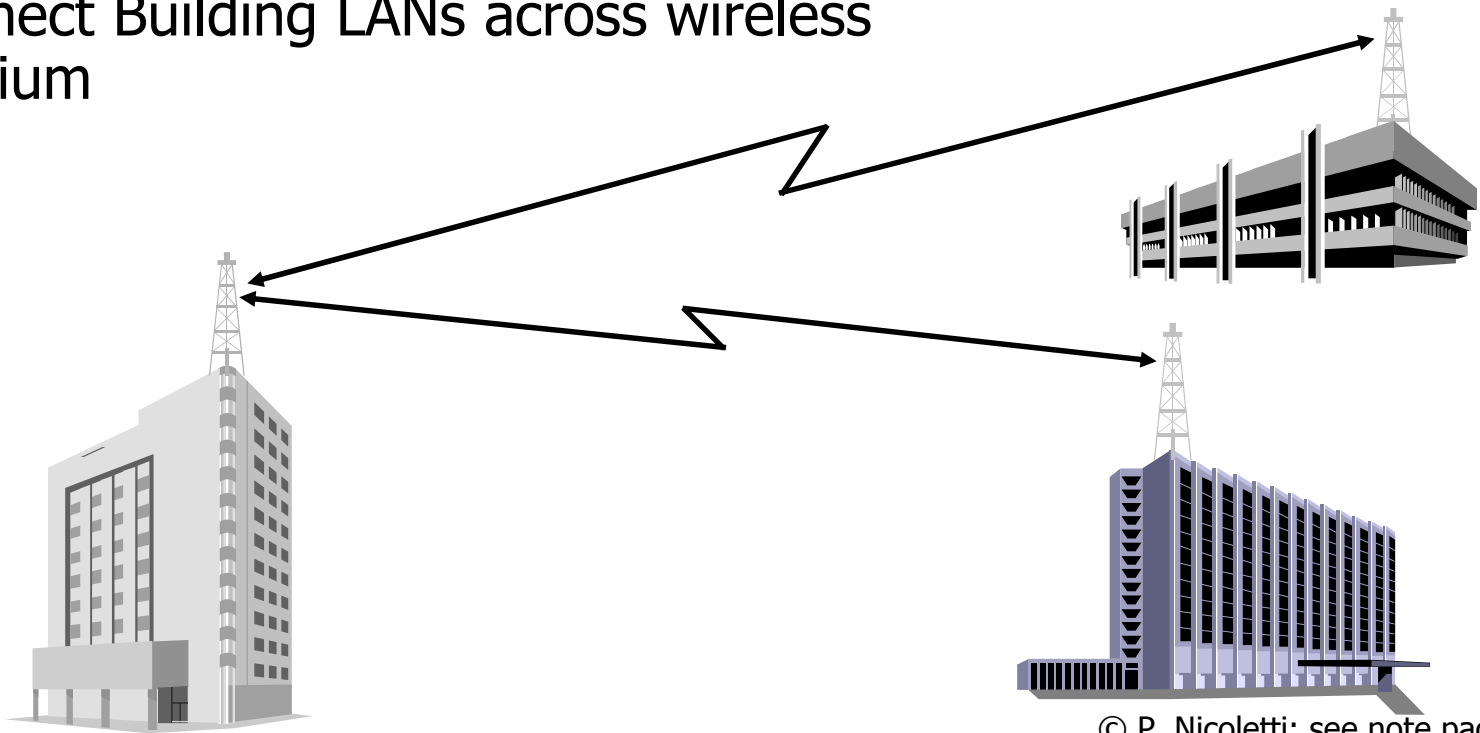
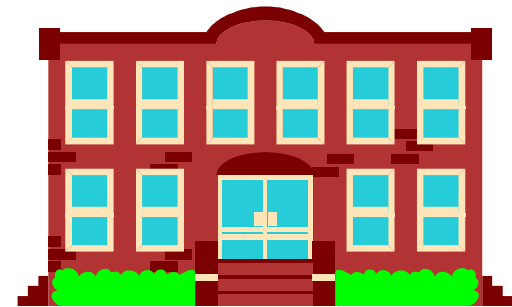
Studio Reti s.a.s
piero[at]studioreti.it

Copyright note

- These slides are protected by copyright and international treaties. The title and the copyrights concerning the slides (inclusive, but non only, every image, photograph, animation, video, audio, music and text) are the author's (see Page 1) property.
- The slides can be copied and used by research institutes, schools and universities affiliated to the Ministry of Public Instruction and the Ministry of University and Scientific Research and Technology, for institutional purpose, not for profit. In this case there is not requested any authorization.
- Any other complete or partial use or reproduction (inclusive, but not only, reproduction on discs, networks and printers) is forbidden without written authorization of the author in advance.
- The information contained in these slides are believed correct at the moment of publication. They are supplied only for didactic purpose and not to be used for installation-projects, products, networks etc. However, there might be changes without notice. The authors are not responsible for the content of the slides.
- In any case there can not be declared conformity with the information contained in these slides.
- In any case this note of copyright may never be removed and must be written also in case of partial use.

Wireless LAN implementations

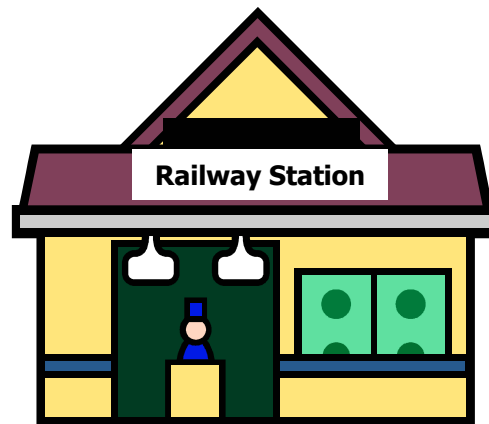
- Indoor Wireless LAN:
 - Cover an area inside the building
- Outdoor Wireless LAN:
 - Connect Building LANs across wireless medium



Wireless LAN implementations

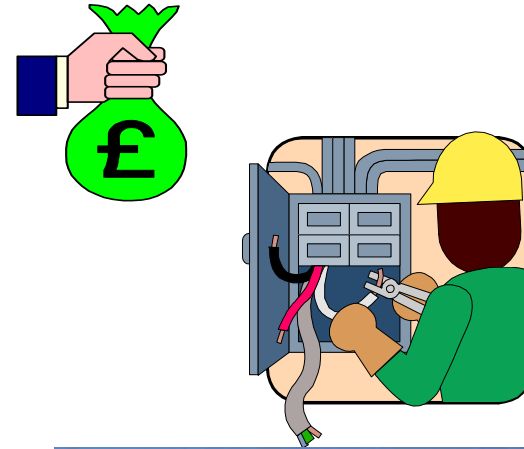
■ HOT SPOT

- Cover a public limited internal or external area where the people can access to Internet services via Wireless LAN



Wireless LAN: Advantages

- No cabling system needed
 - Cost reduction
 - No cabling maintenance
- Easy network coverage in complex or historical buildings
- Easy network implementation in Exhibit areas or Convention Center



Wireless LAN: Advantages

■ Mobility

- Wireless permit to maintain network connectivity when users move from one cell to another cell due by roaming function

■ Scalability

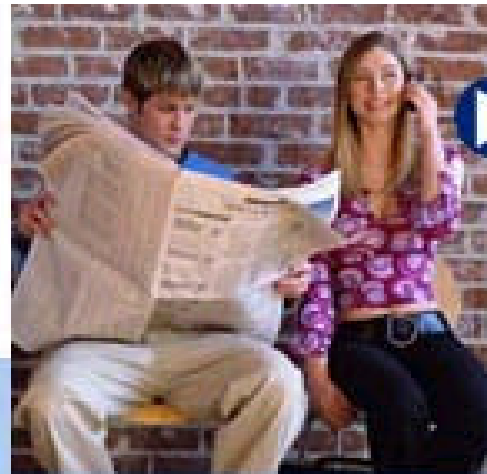
- Wireless permit to increase the network users without additional costs, but:
 - the user connected in a cell must be limited otherwise the effective throughput decrease and can become unacceptable

Wireless LAN: typical implemetations

- Extension of wired LAN in areas like:
 - Meeting rooms
 - Manager offices
 - Exhibition areas
- Rural Area Network
- Residential network (ADSL + Wireless-LAN)

What is WI-FI

- A nonprofit Association where are present many Companies producing wireless equipments. Wi-Fi association as been formed in 1999 and have this mission:
 - Certify and promote interoperability between products based on 802.11 standard
 - <http://www.wi-fi.org/>



What is

Wi-Fi?