

Data Center Architecture

Mario Baldi

**Politecnico di Torino
(Technical University of Turin)
Computer Engineering Department**

<http://www.mario-baldi.net>

Copyright notice

This set of transparencies, hereinafter referred to as slides, is protected by copyright laws and provisions of International Treaties. The title and copyright regarding the slides (including, but not limited to, each and every image, photography, animation, video, audio, music and text) are property of the authors specified on page 1.

The slides may be reproduced and used freely by research institutes, schools and Universities for non-profit, institutional purposes. In such cases, no authorization is requested.

Any total or partial use or reproduction (including, but not limited to, reproduction on magnetic media, computer networks, and printed reproduction) is forbidden, unless explicitly authorized by the authors by means of written license.

Information included in these slides is deemed as accurate at the date of publication. Such information is supplied for merely educational purposes and may not be used in designing systems, products, networks, etc. In any case, these slides are subject to changes without any previous notice. The authors do not assume any responsibility for the contents of these slides (including, but not limited to, accuracy, completeness, enforceability, updated-ness of information hereinafter provided).

In any case, accordance with information hereinafter included must not be declared.

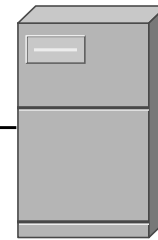
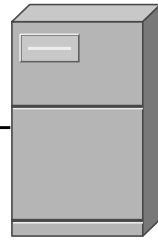
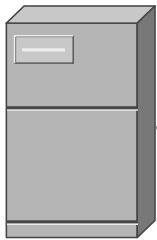
In any case, this copyright notice must never be removed and must be reported even in partial uses.

Multi-tier applications

Web Server

Application server

Data base server

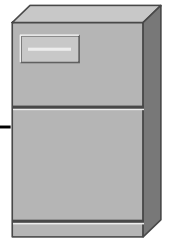
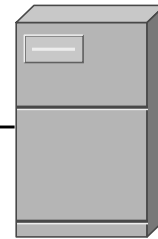
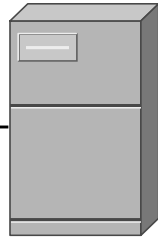
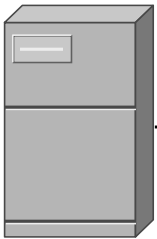


Web Server

Java servlet

**Enterprise
Java Bean**

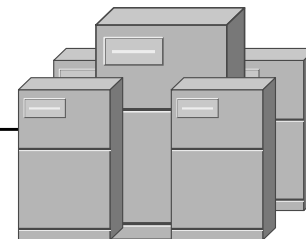
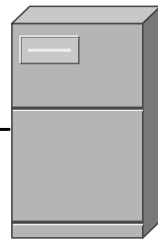
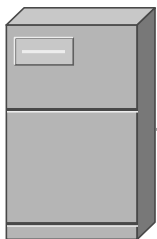
**Data base
server**



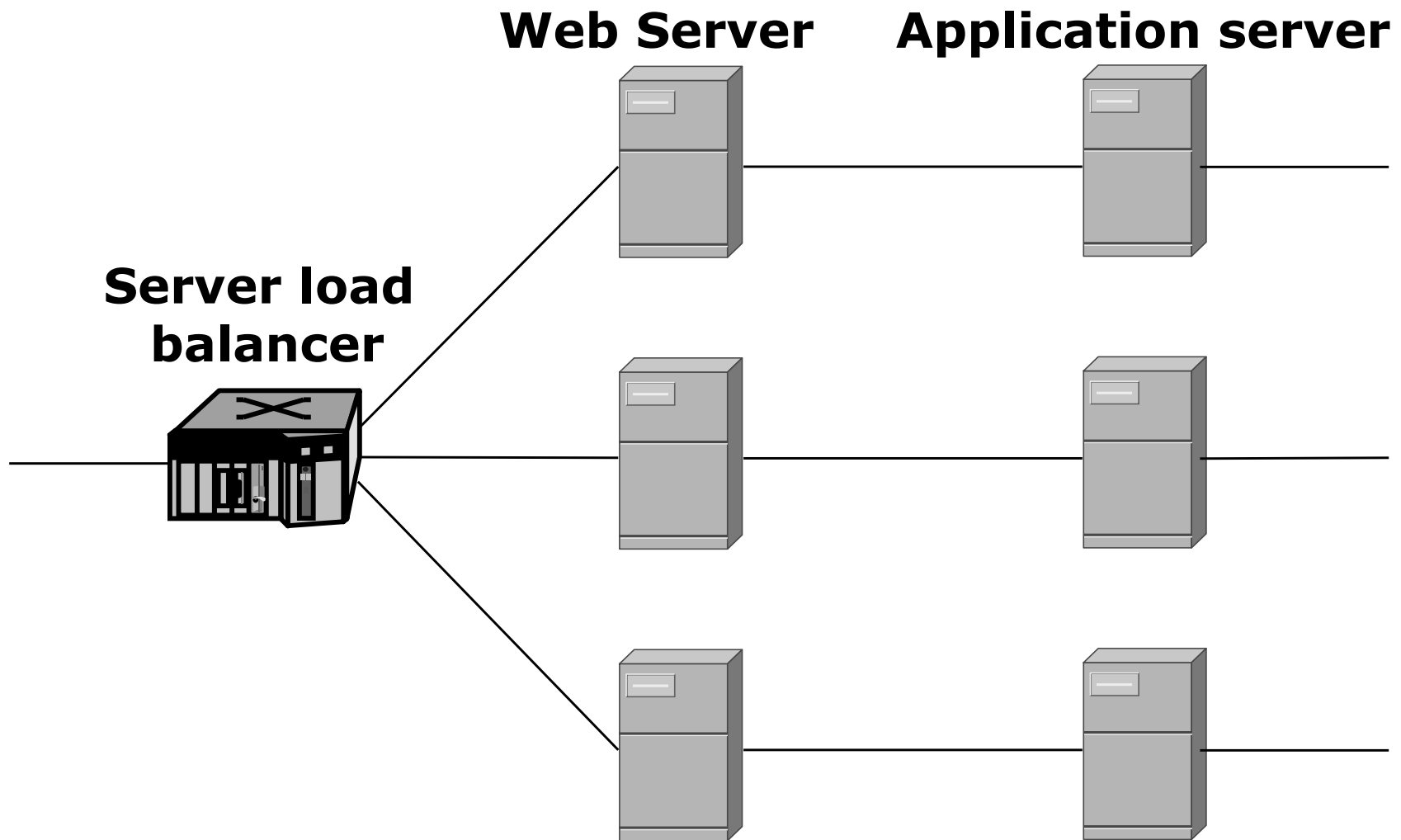
Web Server

Application server

Mainframe

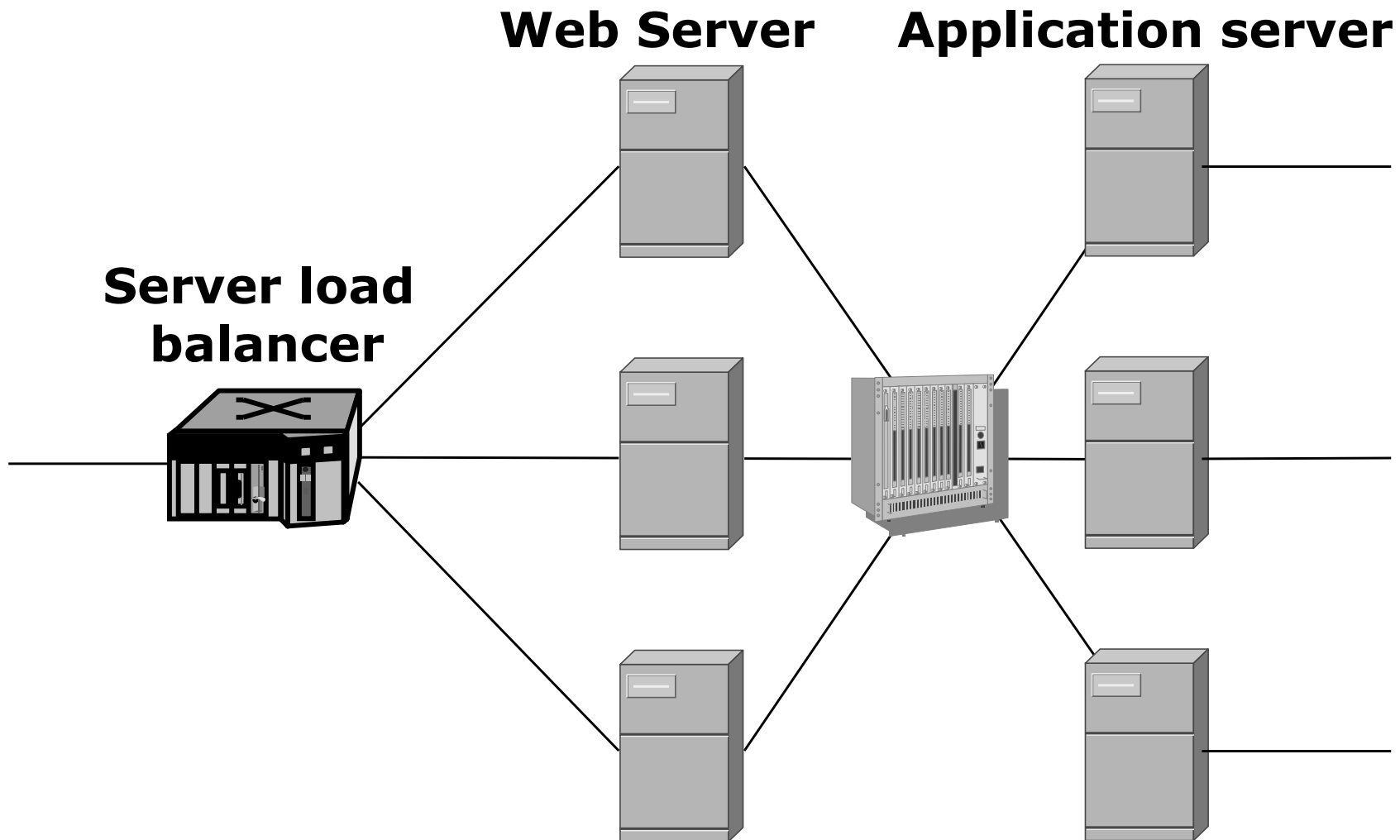


Load Balancing



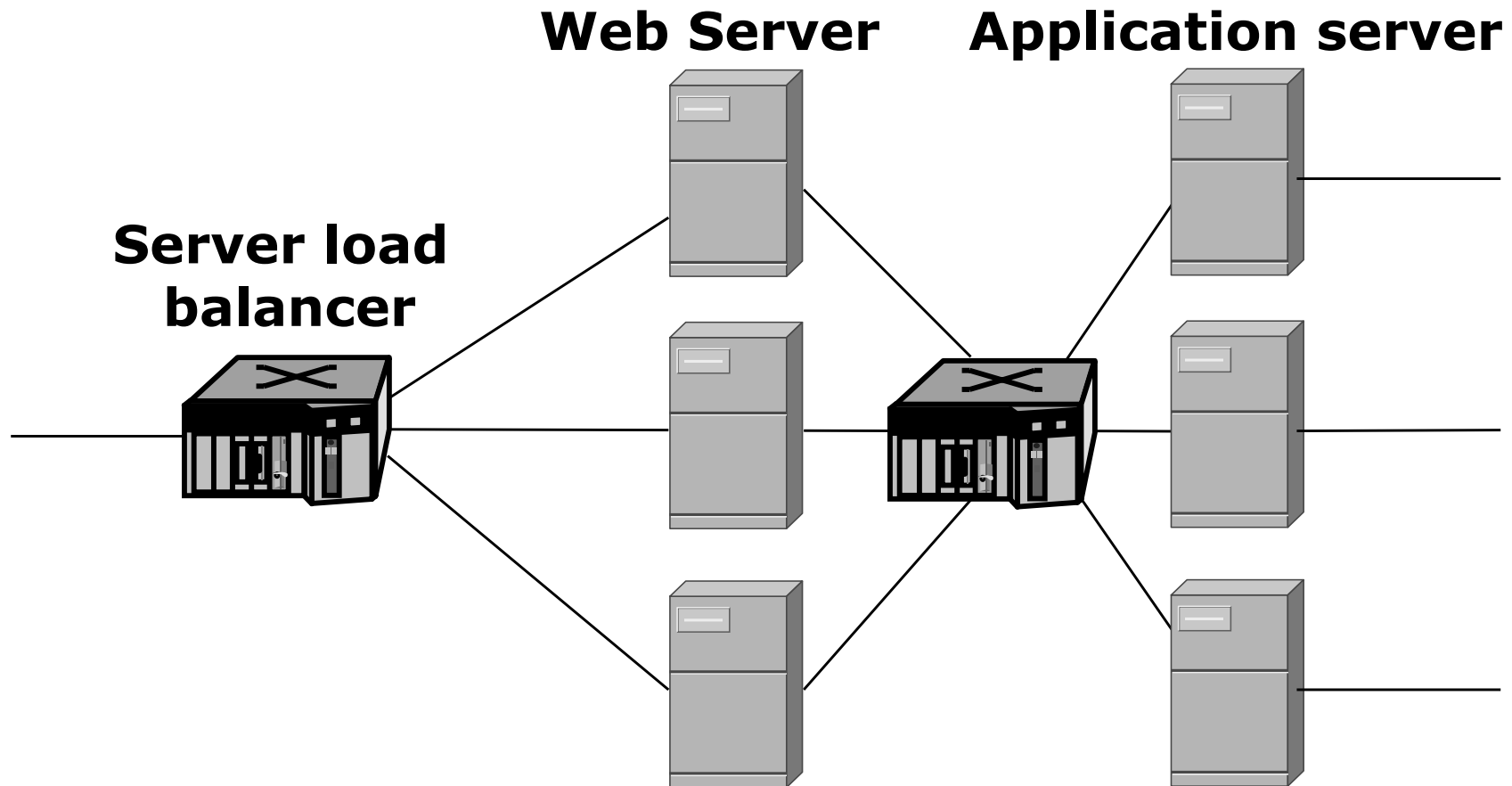
Load Balancing and Multi-Tier applications

Tier-2 server sharing

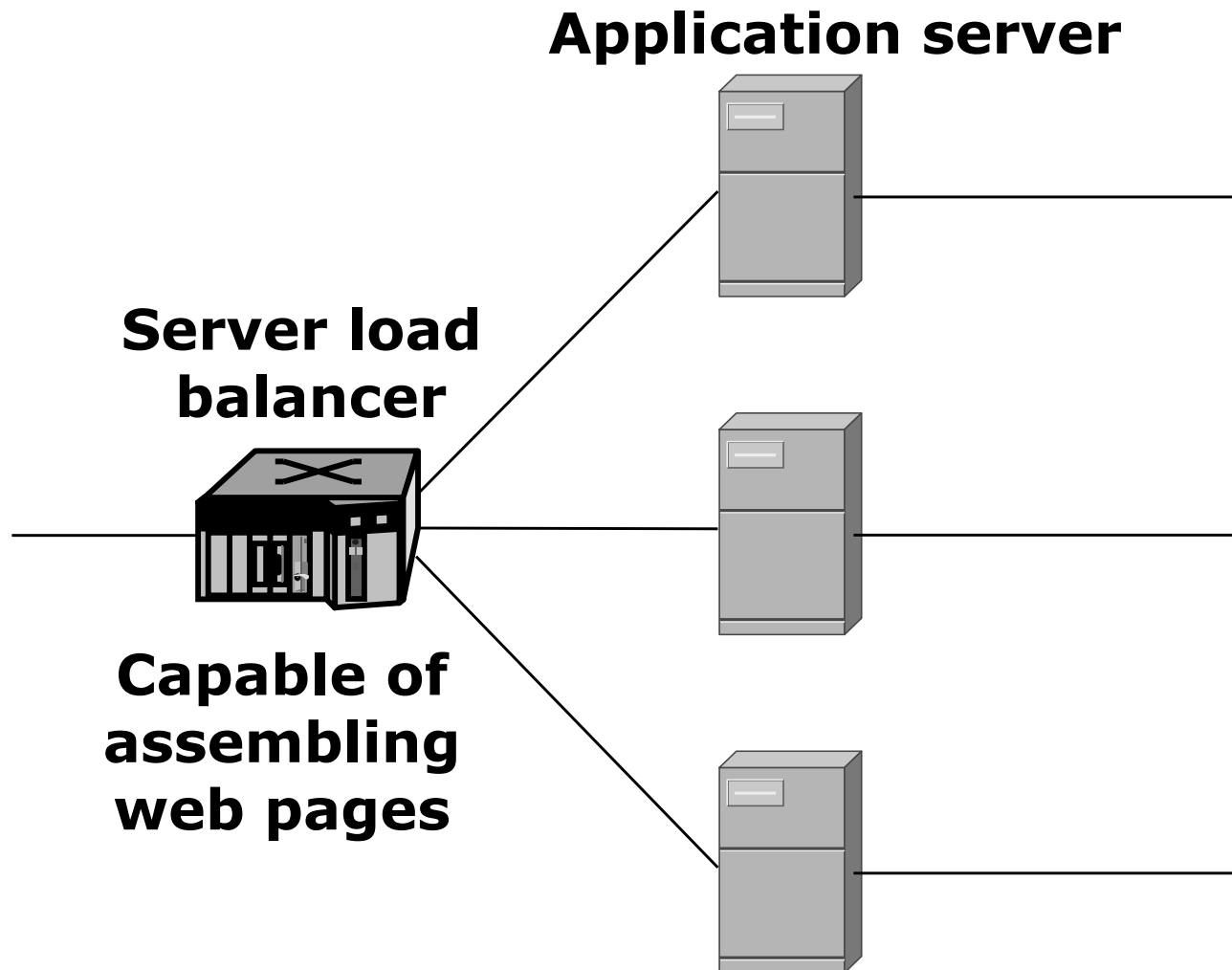


Load Balancing and Multi-Tier applications

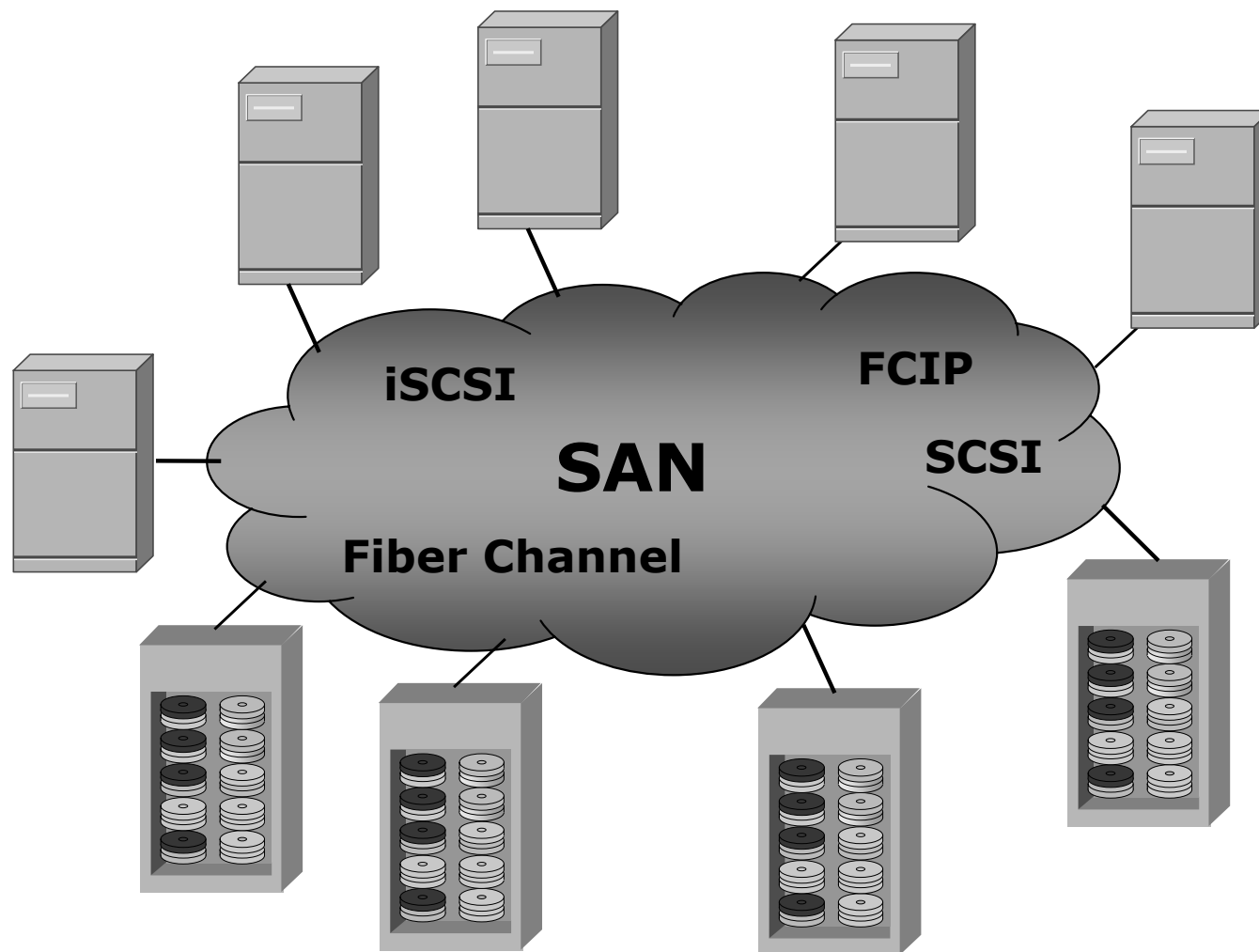
Load balancing on Tier-2 servers (not recommended)



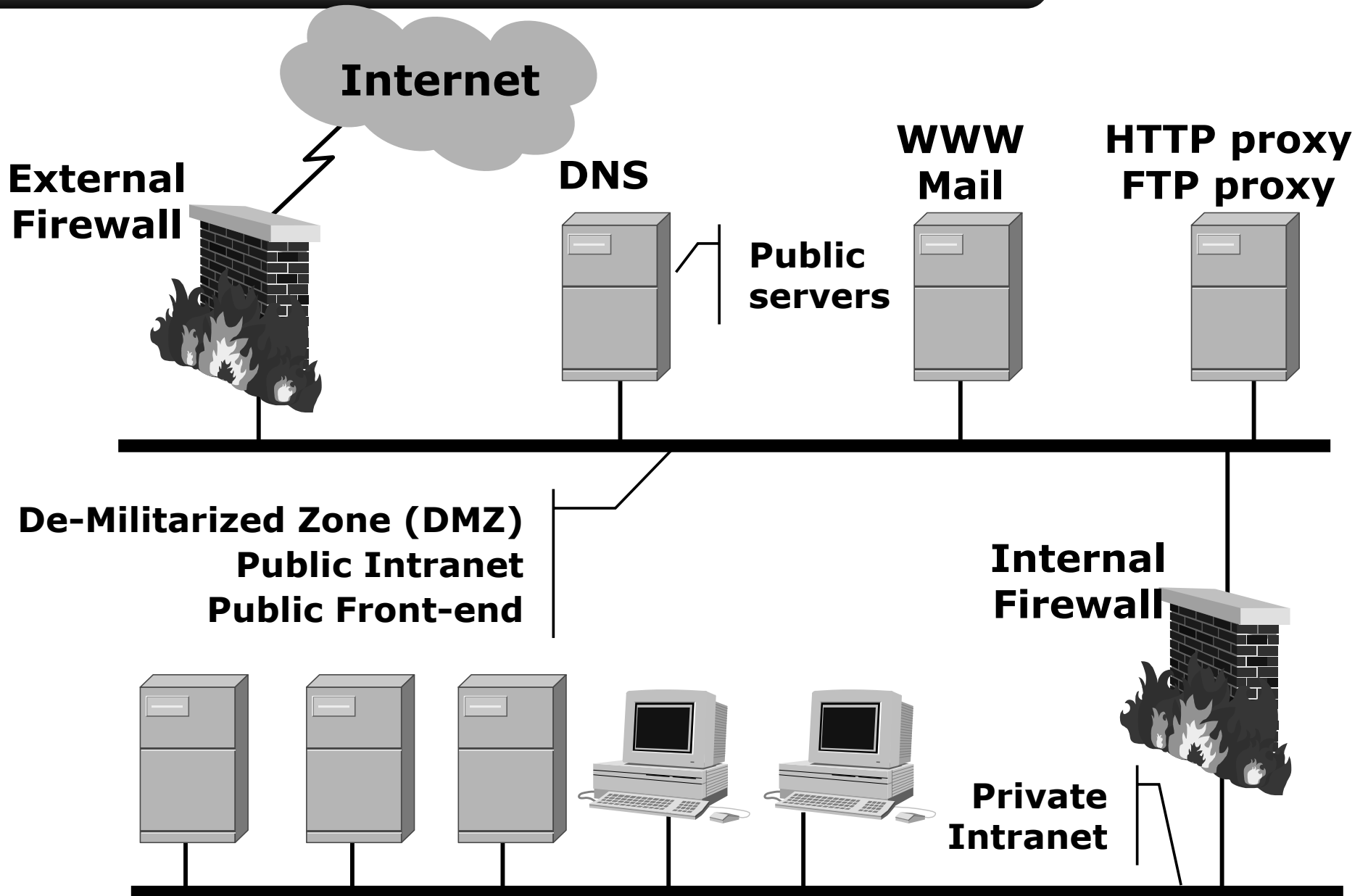
Load Balancing and Multi-Tier applications



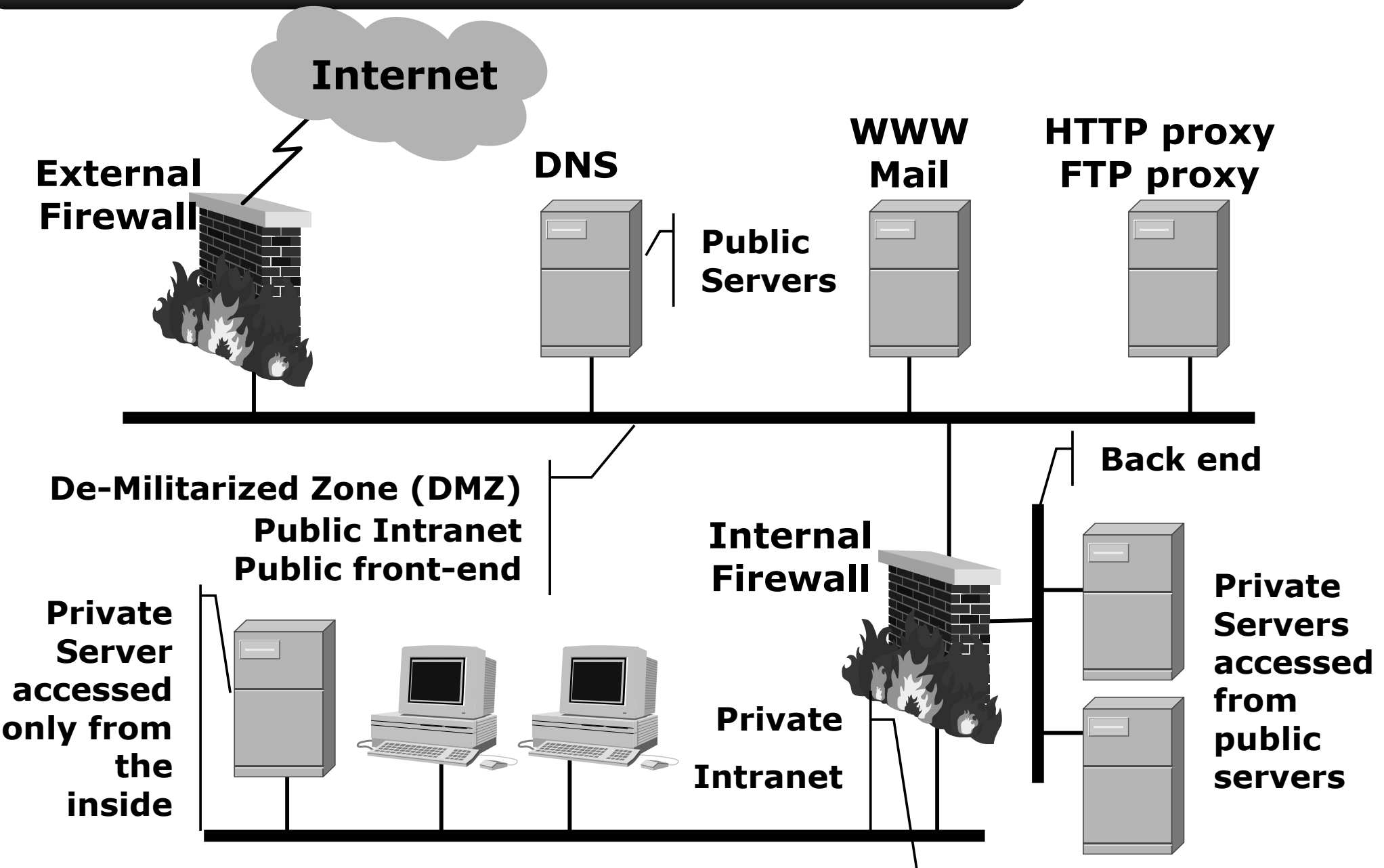
Storage Area Network (SAN)



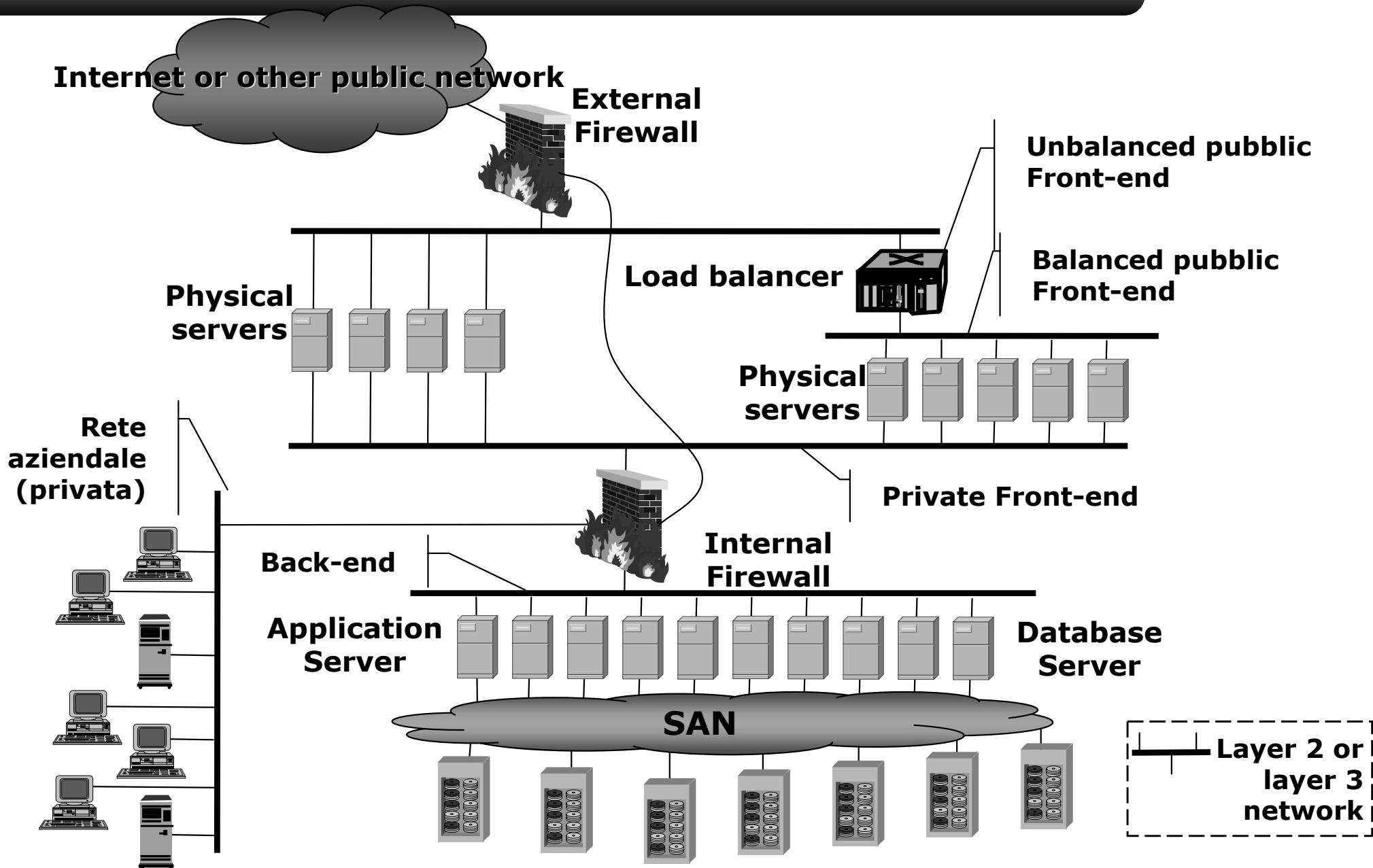
Public network access



Public network access



Security and load balance



Addressing

- **Private addressing can be used**
- **A proxy is used to make hosts access external networks**
- **Static NAT to access servers**
 - **Services publication**
 - **Implemented by an external firewall**